

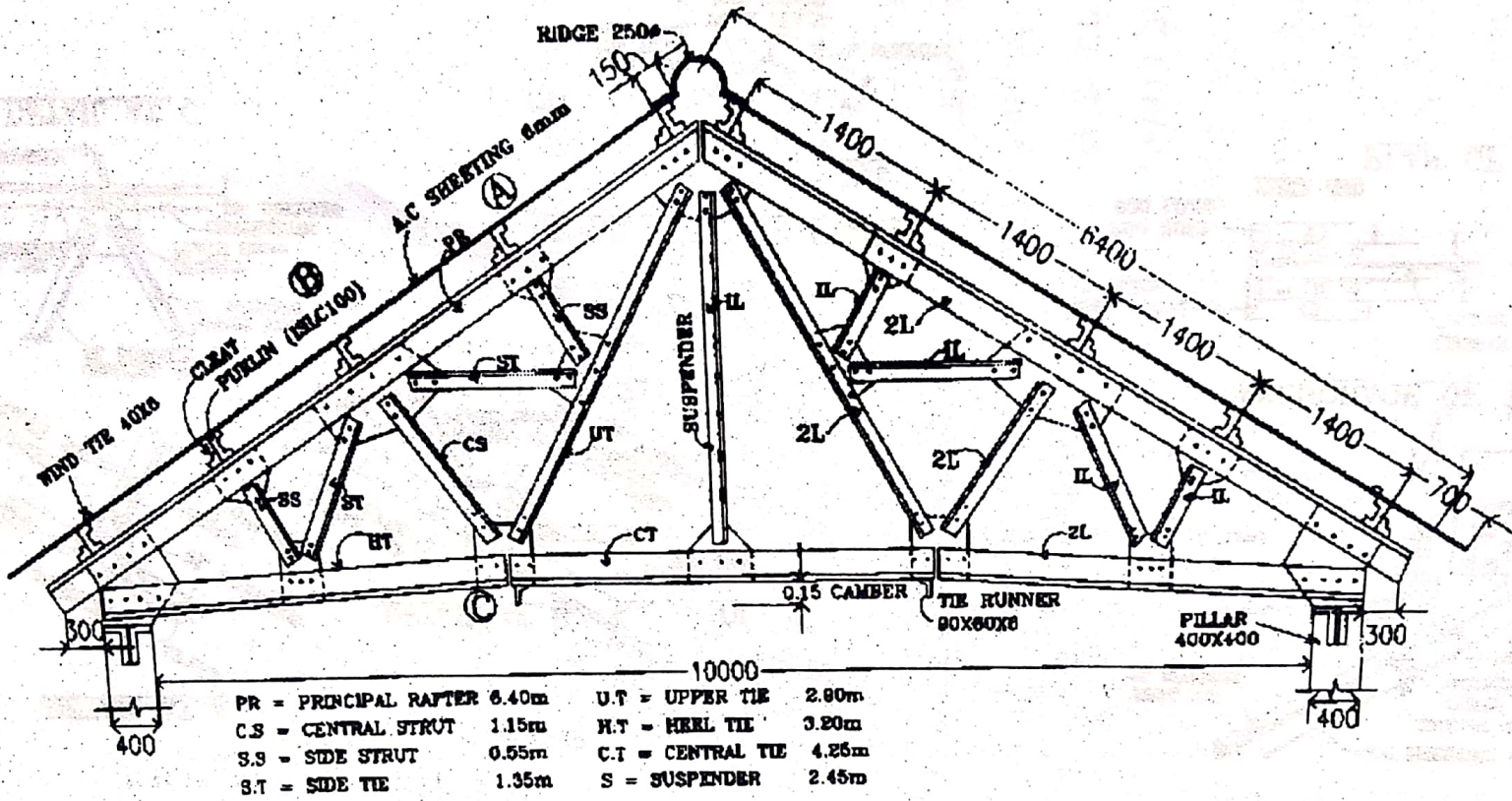
NOTES

ALL DIMENSIONS ARE IN MM
ALL GUSSET PLATES 8mm THICK EXCEPT AT SHOE, WHICH IS 8mm.
2L MEANS DOUBLE ANGLES
ALL RIVETS 16# ROOFING G.S.SHEETING 0.8mm THICK (22GAUGE)

CENTRE LINE LENGTH

PRINCIPAL RAFTER	=3950mm	CENTRAL TIE	=2350mm
STRUT	=650mm	CLEAR SPAN	=5700mm
UPPER TIE	=1800mm	ANGLE OF TRUSS	=26°-34'
LOWER TIE	=1750mm	SPACING OF TRUSS	=3.0mC/C
		PURLIN	=ISLC 100X50

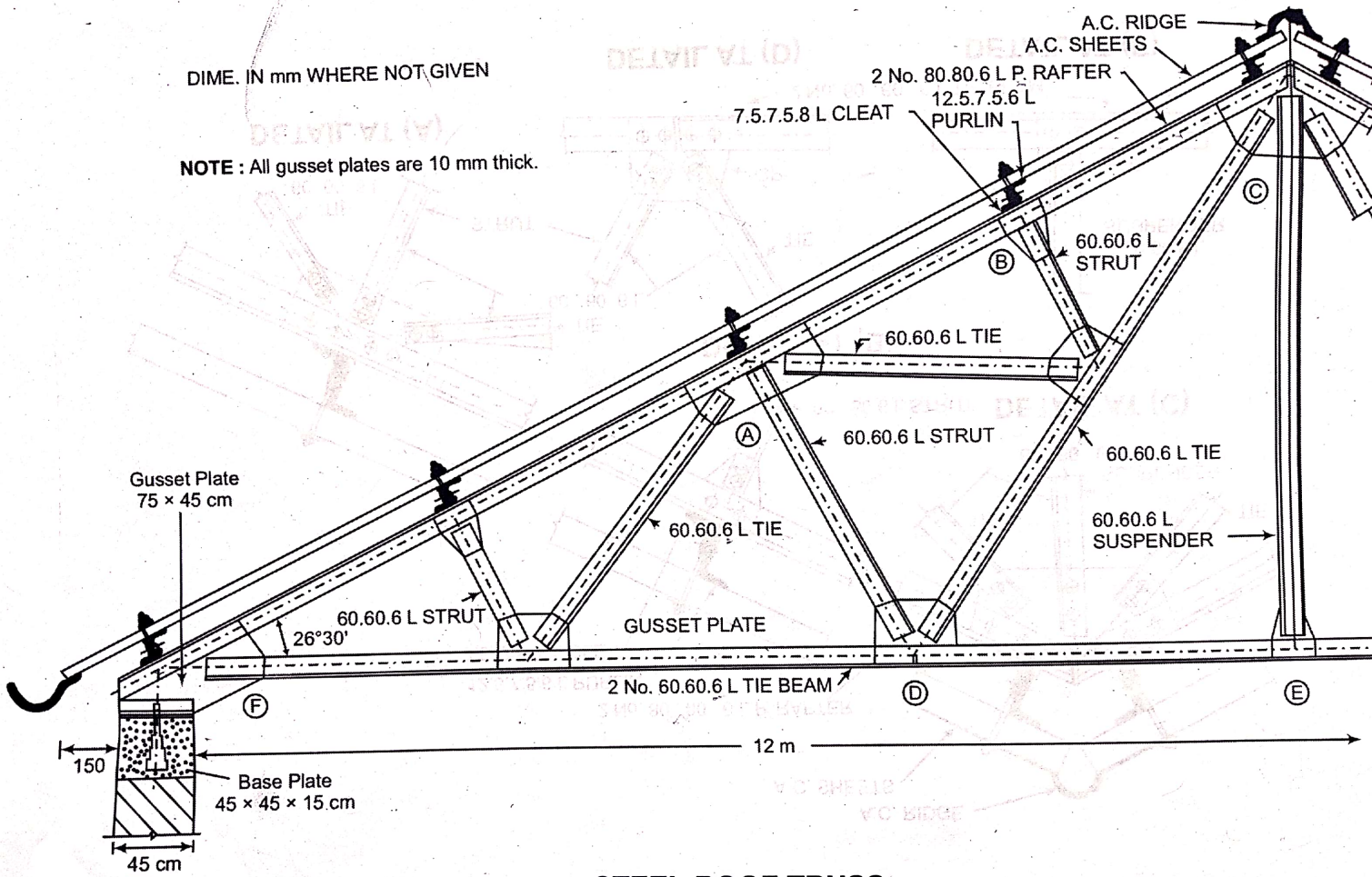
चित्र 12.11. इस्पातीय कैंची छत (Steel Truss Roof)
(पाठ = 6m)



चित्र 12.12. 10 मी० पाट की इस्पातीय कैंची छत (10 m Span Steel Truss Roof)

DIME. IN mm WHERE NOT GIVEN

NOTE : All gusset plates are 10 mm thick.



STEEL ROOF TRUSS

STEEL ROOF TRUSS

